

# AGUA DE BEBER

(MED. BOSSA)

(WATER TO DRINK)

-ANTONIO CARLOS JOSIM/NORMAN GIMBEL/VINICIUS DE MORAES

(INTRO)

A

A-7

B7#9

E7#9

A-7



B7#9

E7#9

A-7

FMA7<sup>7</sup>



A-7

<sup>1.</sup> E7#9

<sup>2.</sup>

A-7



 B7(ALT)

E7#5

A-7



D-7

G<sup>7</sup>

CMA7<sup>7</sup>



B<sup>7</sup>

A-7

C<sup>9</sup>/G

C7#9/G

B7#9/F#

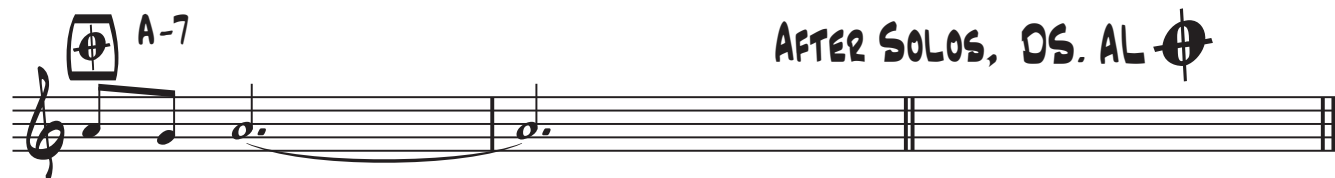
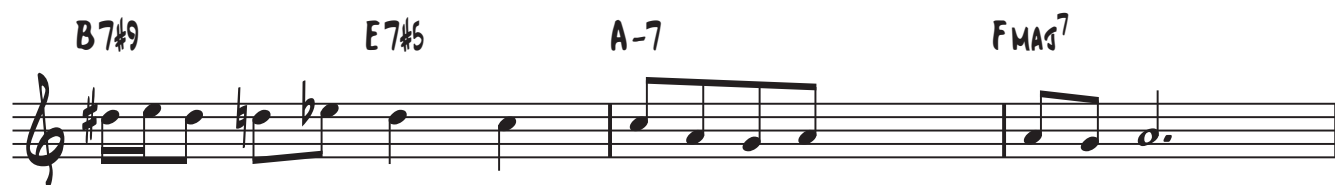


B7(ALT)

E 9sus4

A-7





SOLO A,B,C

AFTER SOLOS, DS. AL **⊕**